

REED SWITCH CONTACT FORM A NORMALLY OPEN CONTACTS

KAM-2

Reed relays, Security, Limit switching, Telecoms, Office equipment (up to 10kHz)

Switching current	0,5 A	Switching power	10 W, VA
Switching voltage	180 V	Pull in range	10...64 AT



Electrical Data

Release range, AT, min	5
Carry current, A	0,5
Breakdown voltage	180/250
V, not less, AC/DC	
Resetting Ratio	0,3...0,9
Contact resistance, Ω , not more	0,15
Operating time including bounce, ms, not more	1
Release time including bounce ms, not more	0,5
Capacitance, pF, not more	0,4
Insulation resistance, G Ω , not less	1
Operating frequency, Hz	100
Switching current frequency, kHz, not more	10

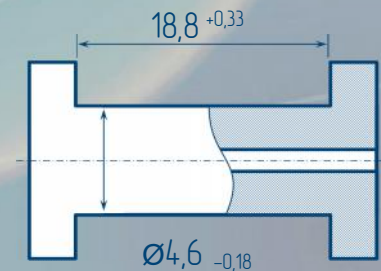
Environmental Data

Contact material	Ru
Life expectancy, switching cycles x10 ⁶ max load power... low load power	0,05...10
Vibration (1...600 Hz), g, not more	10
Resonant frequency, Hz	2400
Shock (1±0,3) ms, g, not more	150
Weight, g, not more	0,33
Operating temperature, °C	-60...125
Humidity, %, not more	98

Certificates



Test Coil



5000 turns, wire Ø0,063 mm
coil resistance 550

Order information

Delivery of reed switches with formed and/or cropped leads and with narrow pull in ranges is available by agreements.



RYAZAN METAL CERAMICS INSTRUMENTATION PLANT, JSC
51V, Novaya St., 390027, Ryazan, Russia
Phone: +7(4912) 240-234, Fax: +7(4912) 240-234 E-mail: ives@rmcip.ru

Update on 13 May 2015

