

# Limit reed switch

## SKV-02



SKV - 02 limit reed switch is intended for application as driving element in aircraft control units. The switch consists of reed sensor and driving element (magnet).

### Specifications

Operate distance, min	mm	6	
Differential pitch	mm	1,5 ... 6,5	
Switching power, max	W/VA	30	
- at resistive load, W			75
- at inductive load, VA			5
- at lamp load, VA			
Switching current range	A	0,05 ... 2,5	
Switching voltage, max	V	30	
Resistance of closed contacts (without leads), max	Ohms	0,3	
Insulation resistance of open contacts, min	MOhms	20	
Breakdown voltage, min	V <sub>AC</sub> / V <sub>DC</sub>	127/ 180	
Switching frequency, max	oper / sec	5	
Sinusoidal vibration (1-2000)Hz, max	g	10	
Acoustic noise (50-10000)Hz, max	dB	150	
Mechanical shock, max	g	750	
- single shock, duration (0,1-2)msec			150
- multiple shock, duration (1-5)msec			
Linear acceleration, max	g	100	
Operating temperature range	°C	-60 ... +85	
High humidity at +25°C, max	%	98	
Weight, max	g	75	

### Life time and safety

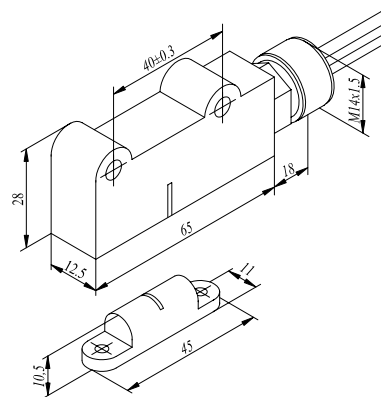
1) In mode 2,5A-30V inductive load, DC  $\tau \leq 0,015s$  (valve with spark protection) on N.O. and 0,16A – 30V lamp load on N.C. – not less than  $2 \cdot 10^5$  operations at switching frequency not more than 5Hz;

2) In mode 0,16A-30V lamp load, DC on N.O and N.C. – not less than  $2 \cdot 10^5$  operations at switching frequency not more than 5Hz;

3) In mode 1,0A-30V resistive load, DC on N.O and N.C. - not less than  $2 \cdot 10^5$  operations at switching frequency not more than 5Hz.

### Marking of switch contacts

- contact N.O. – “yellow”
- common contact – “red”
- contact N.C. – “white” or “green”



Information could be subject to changes. For details please contact marketing department.

16.09.2011



[www.rmcp.ru](http://www.rmcp.ru)

**JSC “RYAZAN METAL CERAMICS INSTRUMENTATION PLANT”**

Russia, 390027, Ryazan, Novaya street, 51 «B»

Marketing: Tel./Fax: (4912) 24-02-34, e-mail: [marketing@rmcp.ru](mailto:marketing@rmcp.ru)

Sales: Fax: (4912) 24-02-34, 44-19-70, 44-68-07

